

SPEC SHEET + MEASUREMENTS

**DIST
RICT®**

District® Perfect Tri® Fleece Crewneck Sweatshirt.

DT1304

Product photo



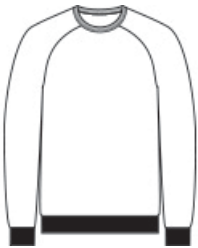
Like its namesake—the iconic Perfect Tri Tee—our Perfect Tri Fleece blends three yarns for an unbelievably soft sweatshirt at an unbeatable value.

- 7.1-ounce (240 GSM)
- 54/40/6 polyester/combed ring spun cotton/rayon, 3-end fleece
- Raglan sleeves
- Side seamed
- 2x1 rib knit neck, cuffs and hem
- Tear-away label

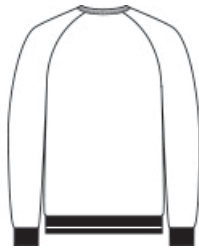
CARE INSTRUCTIONS

Machine Wash Cold With Like Colors. Only Non-Chlorine Bleach, When Needed. Tumble Dry Low. Cool Iron, If Necessary.

Sketches



front



back

SPEC SHEET + MEASUREMENTS



District[®] Perfect Tri[®] Fleece Crewneck Sweatshirt.
DT1304

PRODUCT MEASUREMENTS

	XS	S	M	L	XL	2XL	3XL	4XL
Chest	18 1/2	20	21 1/2	23	24 1/2	26	28	30
Body Length at Back	26 1/2	27 1/2	28 1/2	29 1/2	30 1/2	31 1/2	32	32 1/2
Raglans and Dolmans Sleeve Length	34 1/4	35	35 3/4	36 1/2	37 1/4	38	38 3/4	39 1/2

Chest: Measured across the chest one inch below armhole when laid flat.

Body Length at Back: Measured from high point shoulder to finished hem at back.

Raglans and Dolmans Sleeve Length: Measure from neck edge to finished hem.

SIZE CHARTS

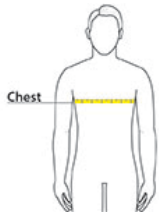
	XS	S	M	L	XL	2XL	3XL	4XL
Chest	32-34	35-37	38-40	41-43	44-46	47-49	50-53	54-57

SPEC SHEET + MEASUREMENTS



District® Perfect Tri® Fleece Crewneck Sweatshirt.
DT1304

HOW TO MEASURE



CHEST

Measure under the arm and around the fullest part of the chest with arms down, keeping tape horizontal.

COLORS



Black
PMS BLACK
C



Deepest Grey
PMS 426C



Desert Tan
Heather
PMS 4269C



Grey Frost
PMS COOL
GREY 11C



Heathered
Charcoal
PMS 7540C



Military Green
Frost
PMS 7771C



Navy Frost
PMS 2379C



New Navy
PMS 533C



Ochre Yellow
Heather
PMS 7563C



Red Frost
PMS 200C



Royal Frost
PMS 7684C



White